

ACCOMMODATIONS

- 42 storeys high with 613 spacious Two-Room Suites
- Fallsview and Presidential Suites
- 100 yards from the Brink of Niagara Falls
- Located beside Niagara Fallsview Casino and Theatre
- 1 block from the Scotiabank Convention Centre
- Centrally located in the Fallsview Tourist District
- On-site restaurants: Starbucks® Coffee, TGIFridays® Restaurant & Sports Bar Fallsview Dining in The Keg Steakhouse + Bar® and Lobby Lounge with Seasonal Patio



STARBUCKS

FRIDAYS

MEETING FACILITIES & SERVICES

- Over 20,000 square feet of meeting/banquet space
- Professional meeting planners to assist with on-site/off-site arrangements and activities
- Fallsview banquet space includes private outdoor balcony
- All conference rooms consist of state-of-the-art built in audio/visual components, including interconnecting multiple screens with "simultaneous display" LCD projectors
- In-house sound, lighting and audio/visual services provided by Encore
- LCD projectors in each meeting room
- Earn Hilton Honors® Points
- Motorized projection screens • Room service
- High-speed wireless internet • Full business centre
- Self parking • ATM machines



Embassy Suites by Hilton Niagara Falls – Fallsview

905.356.3600 | 1 800 420 6107

6700 Fallsview Boulevard | Niagara Falls | ON | L2G 3W6

embassysuitesniagara.com | sales@embassysuitesniagara.com

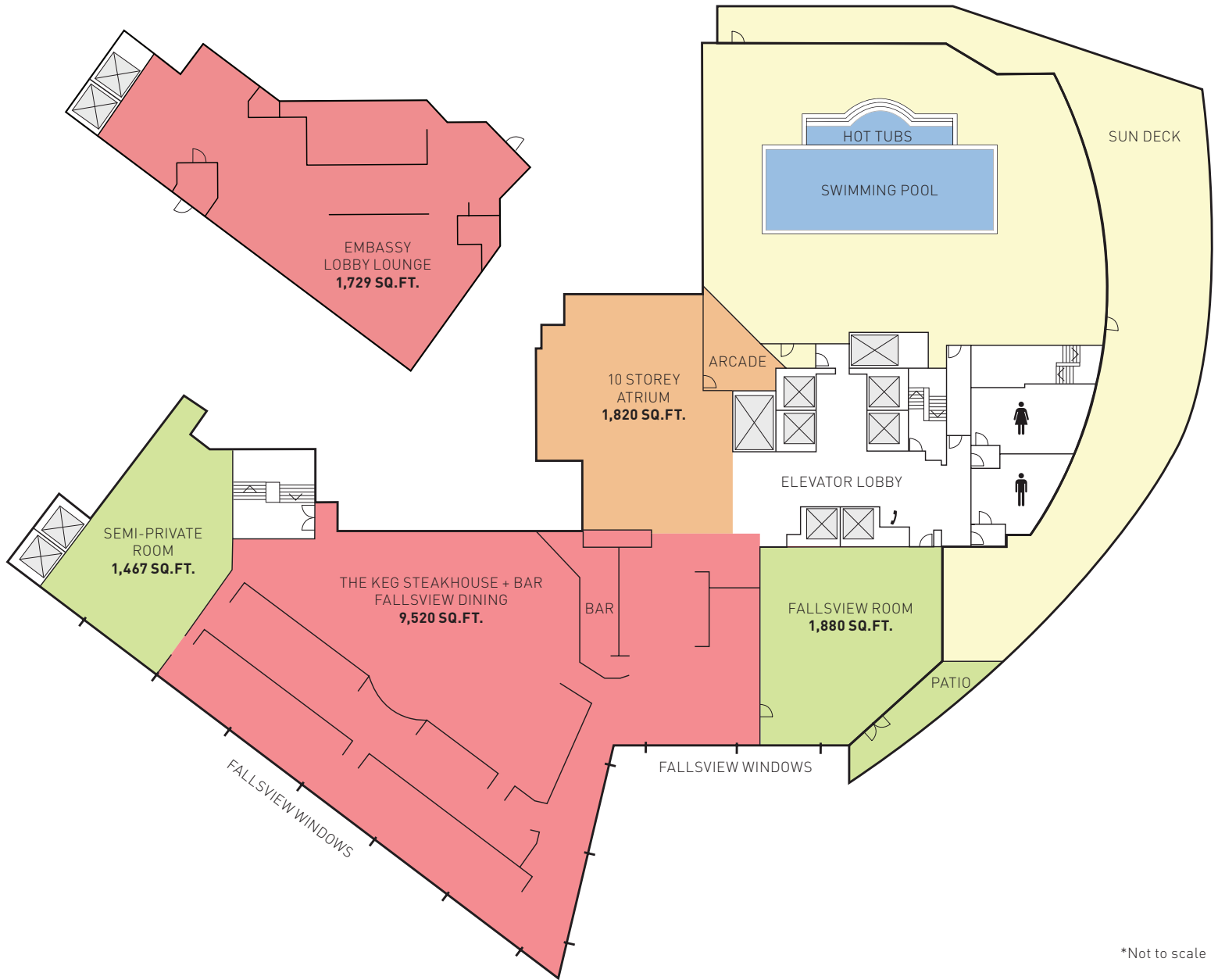


**EMBASSY
SUITES**
by Hilton™

Niagara Falls Fallsview



LEVEL 9 CONFERENCE LEVEL

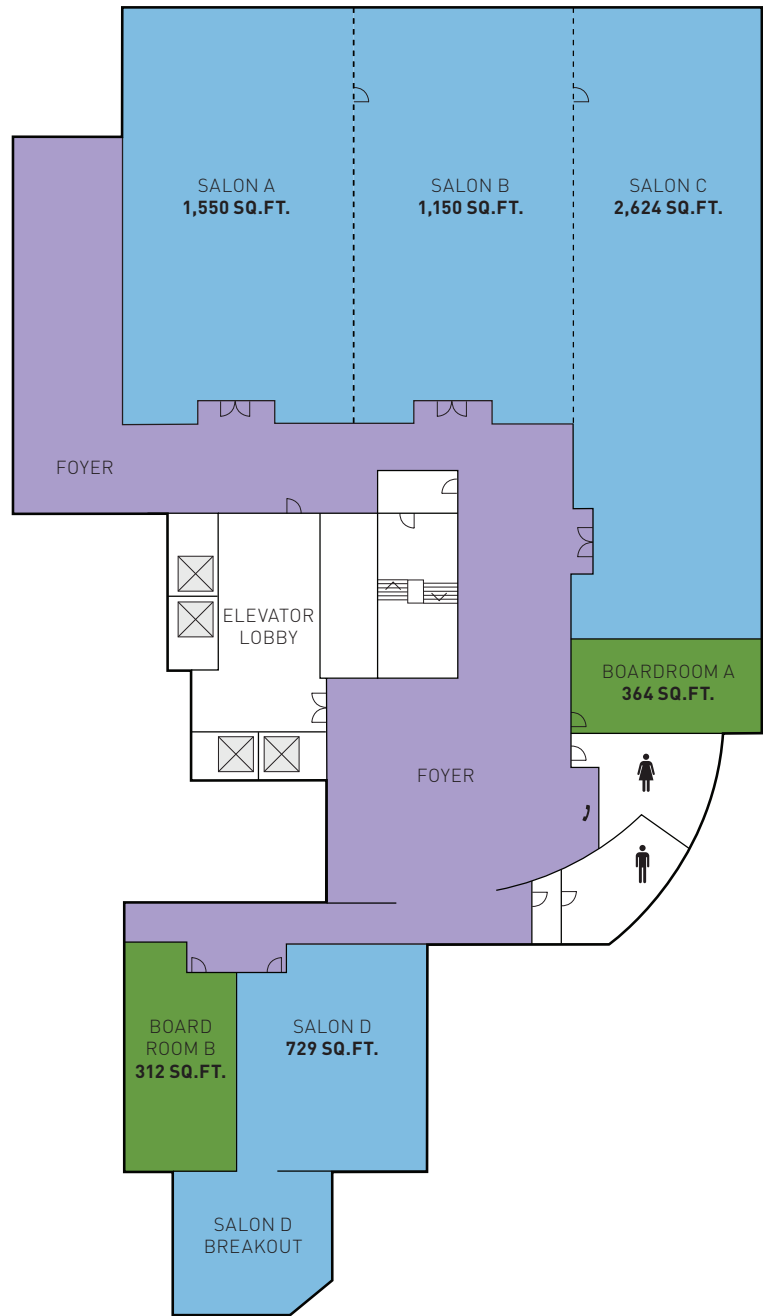


*Not to scale

MEETING SPACE CAPACITIES - TOTAL SPACE = **16,416 SQ.FT.**

MEETING ROOMS	DIMENSIONS	CEILING HEIGHT	SQUARE FOOT (SQ.FT.)	THEATRE	CLASS ROOM	BOARD ROOM	U-SHAPE	RECEPTION	BANQUET	HOLLOW SQUARE	HALF ROUNDS
THE KEG STEAKHOUSE + BAR	-	-	9520	-	-	-	-	-	550	-	-
LOBBY LEVEL LOUNGE	63x28	10	1729	-	-	-	-	100	50	-	-
FALLSVIEW ROOM	41x46	13	1880	-	-	-	-	140	90	-	-
SEMI-PRIVATE ROOM	32x45	13	1467	-	-	-	-	120	80	-	-
10-STOREY ATRIUM	-	-	1820	-	-	-	-	200	100	-	-

P1 CONFERENCE LEVEL



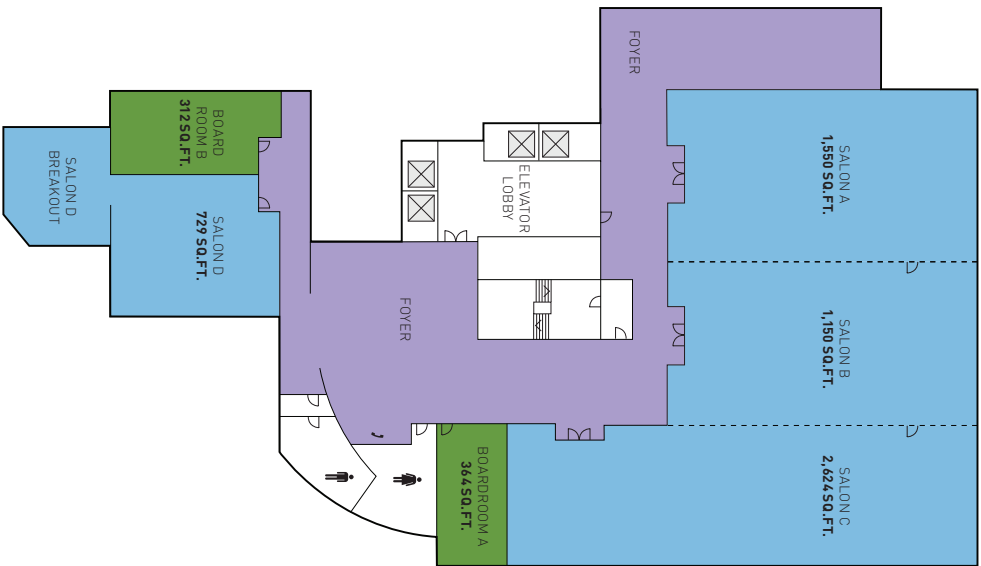
*Not to scale

MEETING SPACE CAPACITIES - TOTAL SPACE = **6,729 SQ.FT.**

*Salons A, B and C can be utilized as three separate rooms or combined as one large general session room.

MEETING ROOMS	DIMENSIONS	CEILING HEIGHT	SQUARE FOOT (SQ.FT.)	THEATRE	CLASS ROOM	BOARD ROOM	U-SHAPE	RECEPTION	BANQUET	HOLLOW SQUARE	HALF ROUNDS
SALON A	31X50	9	1550	90	70	30	38	100	60	40	48
SALON B	23X50	9	1150	70	60	30	30	70	50	30	40
SALON C	32X82	9	2624	160	130	40	40	150	140	50	96
SALON A+B+C	-	9	5324	350	260	-	-	300	260	-	225
SALON A+B	-	9	2700	165	130	-	-	170	110	-	88
SALON B+C	-	9	3774	235	190	-	-	220	190	-	136
SALON D	27X27	8	729	45	30	20	20	50	40	24	32
BOARDROOM A	13X28	8	364	20	20	14	-	25	30	-	-
BOARDROOM B	13X24	8	312	-	-	12	-	-	-	-	-

P1 CONFERENCE LEVEL

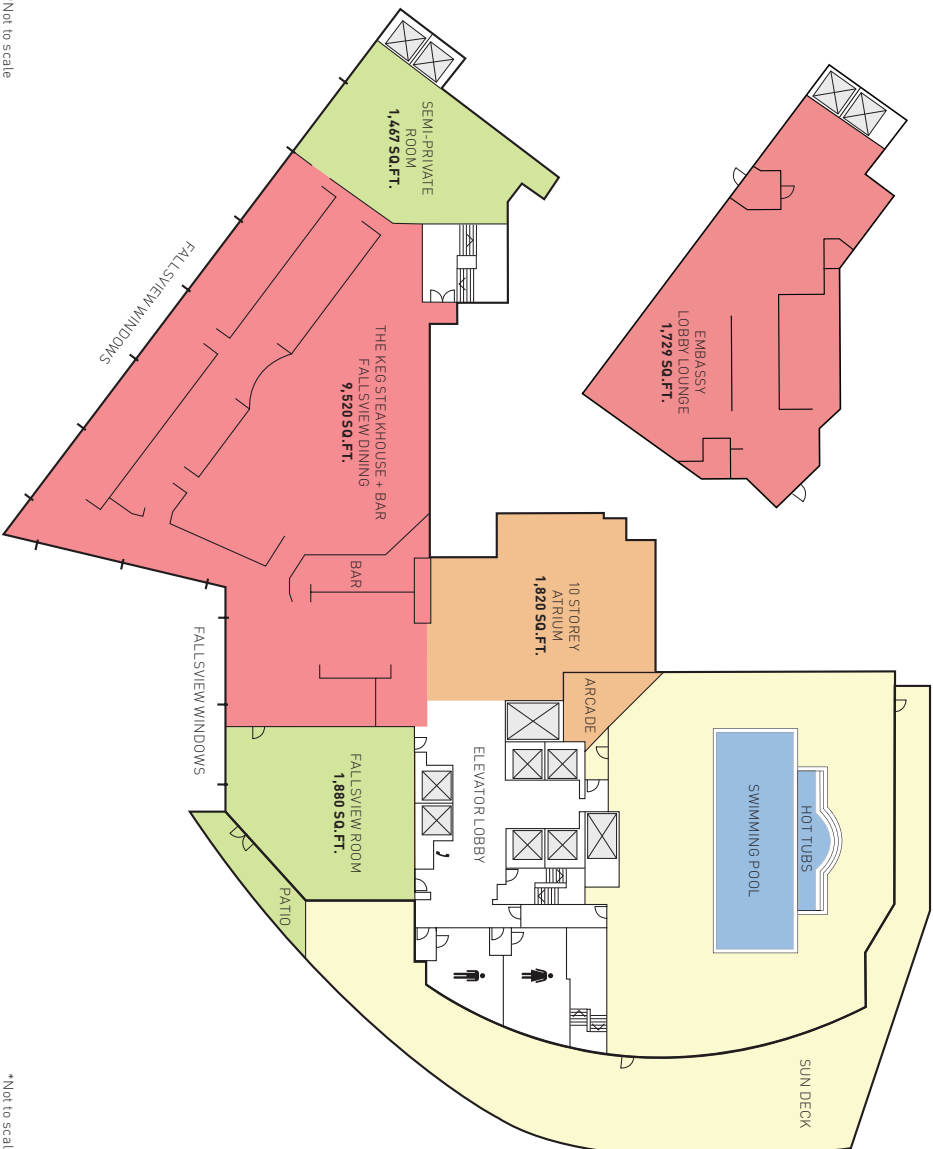


MEETING SPACE CAPACITIES - TOTAL SPACE = 6,729 SQ.FT.

*Salons A, Board C can be utilized as three separate rooms or combined as one large general session room.

MEETING ROOMS	DIMENSIONS	CEILING HEIGHT	SQUARE FOOT (sq.ft.)	THEATRE ROOM	CLASS ROOM	BOARD ROOM	U-SHAPE	RECEPTION	BANQUET	HOLLOW SQUARE	HALF ROUNDS
SALON A	31X50	9	1550	90	70	30	38	100	60	40	48
SALON B	23X50	9	1150	70	60	30	30	70	50	30	40
SALON C	32X82	9	2624	140	130	40	40	150	140	50	96
SALON A+B+C	-	9	5324	350	260	40	40	300	260	50	225
SALON A+B	-	9	2700	165	130	-	-	170	110	-	88
SALON B+C	-	9	3774	235	190	-	-	220	190	-	136
SALON D	27X27	8	729	45	30	20	20	50	40	24	32
BOARDROOM A	13X28	8	364	20	-	-	-	25	30	-	-
BOARDROOM B	13X24	8	312	-	-	-	-	-	-	-	-

LEVEL 9 CONFERENCE LEVEL



*Not to scale

*Not to scale

MEETING SPACE CAPACITIES - TOTAL SPACE = 16,416 SQ.FT.

MEETING ROOMS	DIMENSIONS	CEILING HEIGHT	SQUARE FOOT (sq.ft.)	THEATRE ROOM	CLASS ROOM	BOARD ROOM	U-SHAPE	RECEPTION	BANQUET	HOLLOW SQUARE	HALF ROUNDS
EMBASSY LOBBY LOUNGE	-	-	1,729	-	-	-	-	-	-	-	-
THE KEG STEAKHOUSE + BAR LOBBY LEVEL LOUNGE	6.3x28	10	1729	-	-	-	-	100	50	-	-
FALLSVIEW ROOM	41x46	13	1880	-	-	-	-	140	90	-	-
SEMI-PRIVATE ROOM	32x45	13	1467	-	-	-	-	120	80	-	-
10-STOREY ATRIUM	-	-	1820	-	-	-	-	200	100	-	-